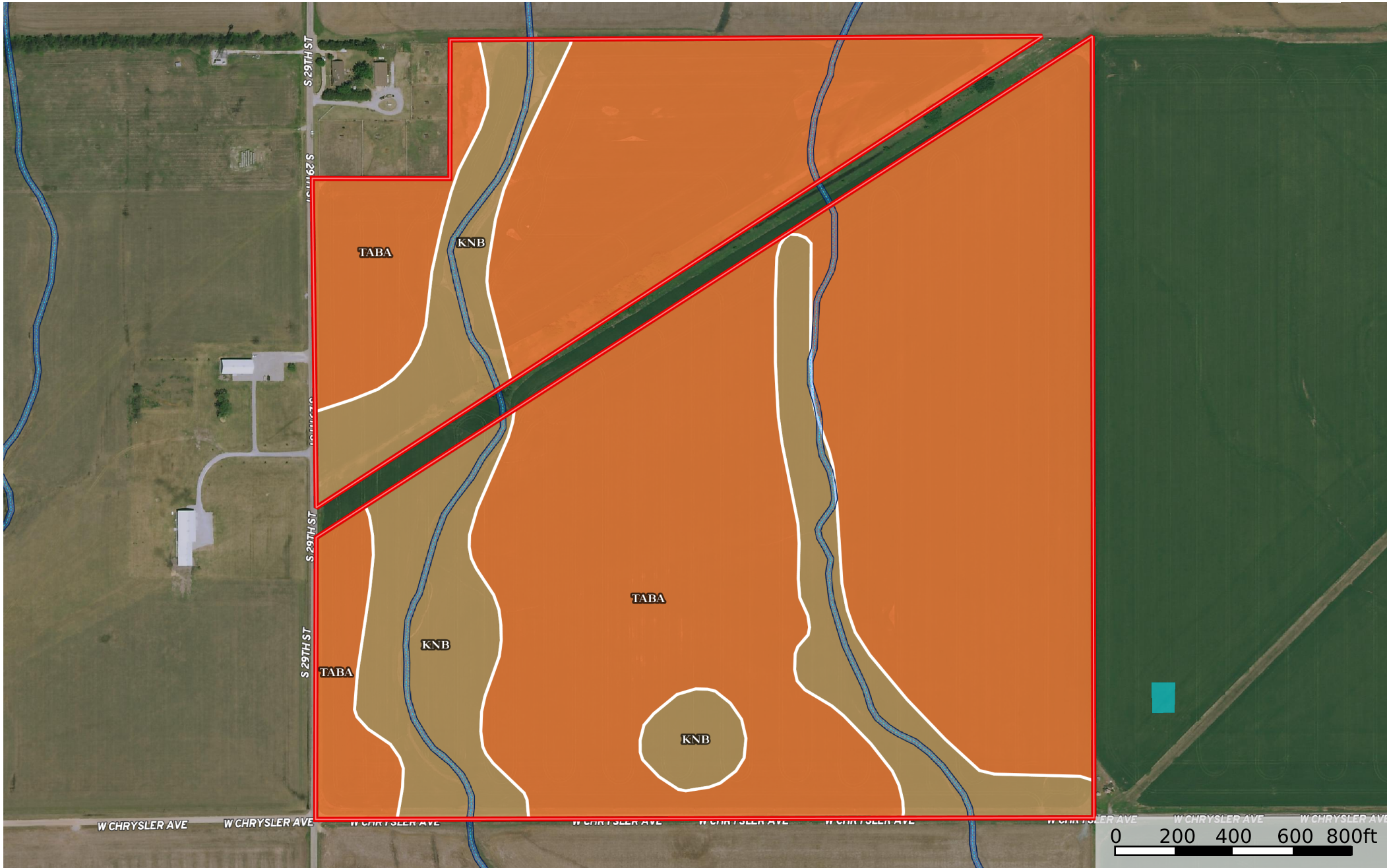


#OK-614 Kay County, Oklahoma 148 Acres M/L

Kay County, Oklahoma, 148 AC +/-



|  All Polygons 148.04 ac

SOIL CODE	SOIL DESCRIPTION	ACRES	%	CPI	NCCPI	CAP
TabA	Tabler silt loam, 0 to 1 percent slopes	116.86	78.94	0	50	2s
KnB	Kirkland silt loam, 1 to 3 percent slopes	31.18	21.06	0	43	2s
TOTALS		148.04(*)	100%	-	48.53	2.0

(*) Total acres may differ in the second decimal compared to the sum of each acreage soil. This is due to a round error because we only show the acres of each soil with two decimal.

|  Boundary 39.73 ac

SOIL CODE	SOIL DESCRIPTION	ACRES	%	CPI	NCCPI	CAP
TabA	Tabler silt loam, 0 to 1 percent slopes	31.08	78.23	0	50	2s
KnB	Kirkland silt loam, 1 to 3 percent slopes	8.65	21.77	0	43	2s
TOTALS		39.73(*)	100%	-	48.48	2.0

(*) Total acres may differ in the second decimal compared to the sum of each acreage soil. This is due to a round error because we only show the acres of each soil with two decimal.

|  Boundary 108.31 ac

SOIL CODE	SOIL DESCRIPTION	ACRES	%	CPI	NCCPI	CAP
TabA	Tabler silt loam, 0 to 1 percent slopes	85.78	79.2	0	50	2s
KnB	Kirkland silt loam, 1 to 3 percent slopes	22.53	20.8	0	43	2s
TOTALS		108.31(*)	100%	-	48.54	2.0









(*) Total acres may differ in the second decimal compared to the sum of each acreage soil. This is due to a round error because we only show the acres of each soil with two decimal.

Capability Legend

Increased Limitations and Hazards

Decreased Adaptability and Freedom of Choice Users

Land, Capability

								
	1	2	3	4	5	6	7	8
'Wild Life'	•	•	•	•	•	•	•	•
Forestry	•	•	•	•	•	•	•	
Limited	•	•	•	•	•	•	•	
Moderate	•	•	•	•	•	•		
Intense	•	•	•	•	•			
Limited	•	•	•	•				
Moderate	•	•	•					
Intense	•	•						
Very Intense	•							

Grazing Cultivation

(c) climatic limitations (e) susceptibility to erosion

(s) soil limitations within the rooting zone (w) excess of water